

Slide

auto-drawing map geometry

Dr. Paul Mach
paul@strava.com



What is **STRAVA**

- Fitness tracking website
- “An online network for athletes”
- 120 million rides and runs
- 2 million new activities a week



1

Grab a GPS Device



2

Go Out for a Run or Ride



3

View Your Activities
on Strava.com

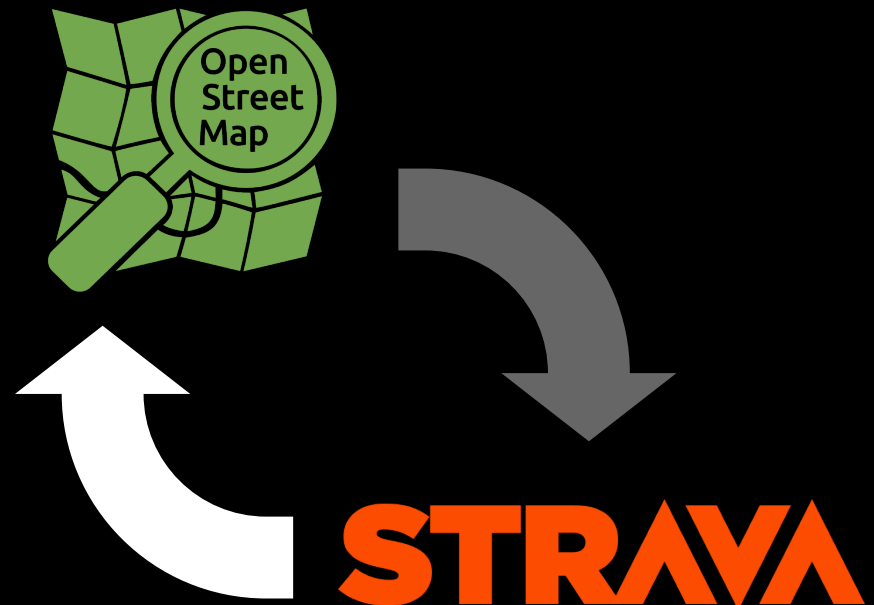
How we are using OSM

- **Route Builder** (<http://www.strava.com/routes/new>)
 - based on OSM
 - custom routing engine written in Scala
 - incorporates route popularity
- **Maps from Mapbox**



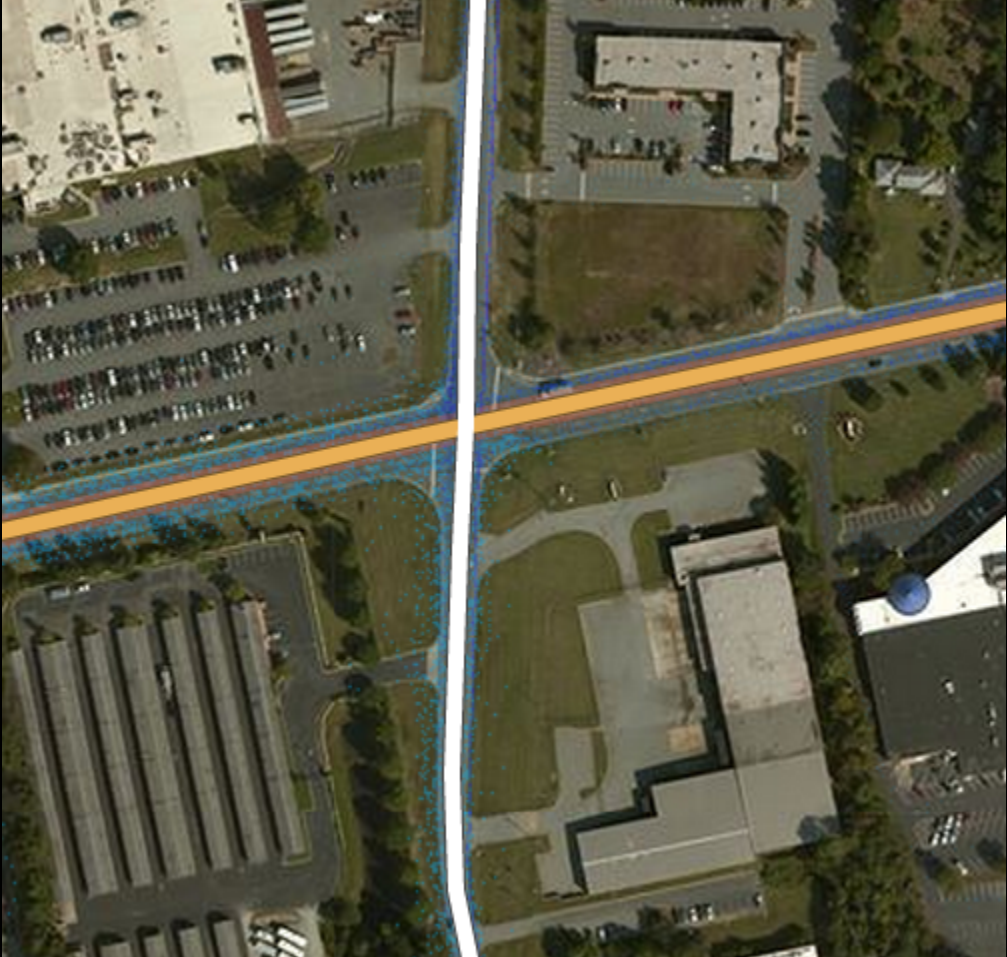
How we are using OSM

- Route Builder (<http://www.strava.com/routes/new>)
 - based on OSM
 - custom routing engine written in Scala
 - incorporates route popularity
- Maps from Mapbox



Helping to improve OSM

- Geometry
 - connections for routing
 - better representation of trails and rural roads









Reporting Tools



Select from reports.

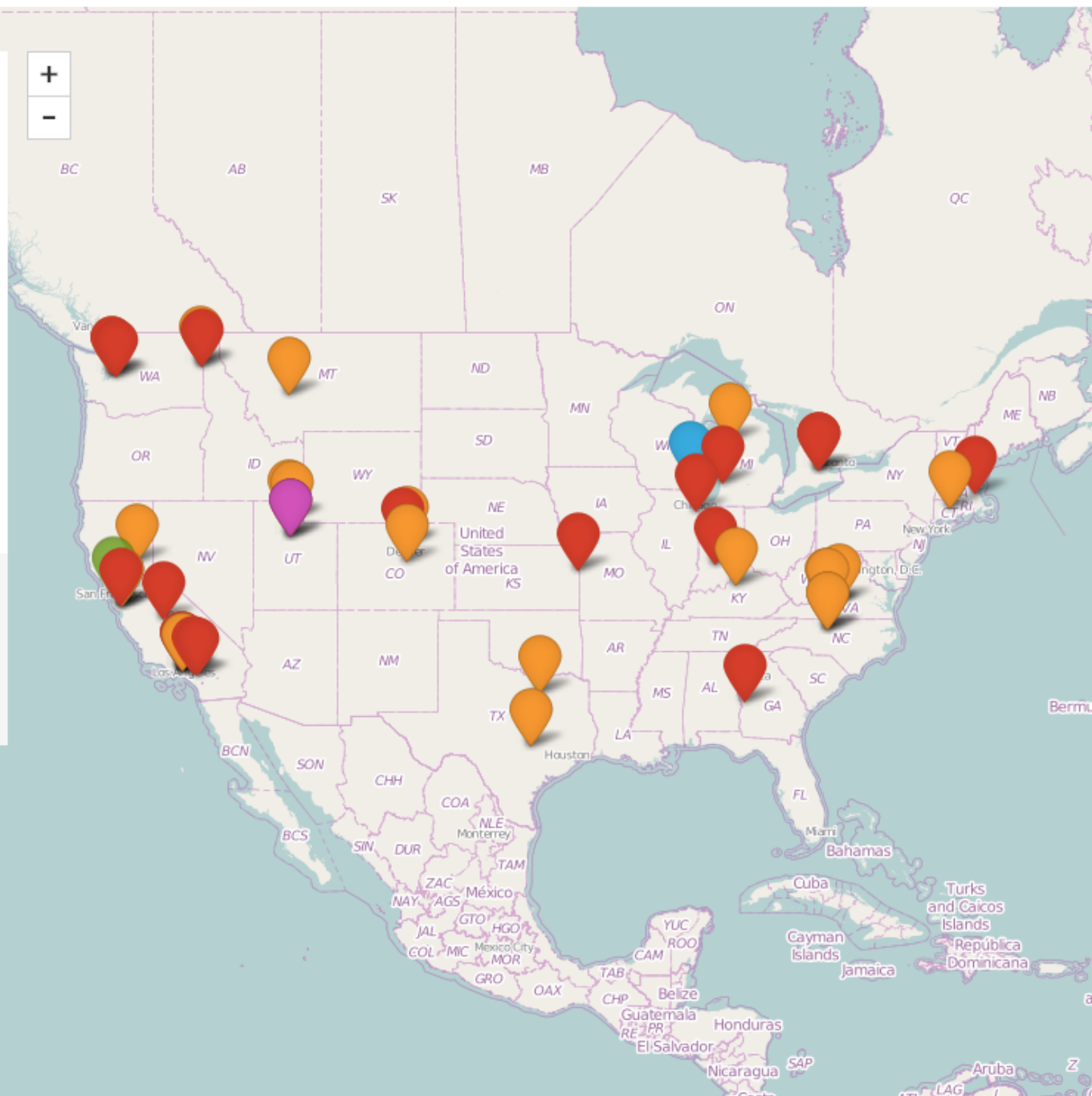
-  The route won't go to the road
-  Can't route on trail
-  The map info is incorrect
-  Other

  Fixed, Can't Fix or What?

Total Reported: 3038 **Fixed: 506**

What's this:

[Strava routing](#) errors reported by users are displayed here for use by [OSM](#) map editors.



Reporting Tools

Select from reports.

- The route won't go to the road
- Can't route on trail
- The map info is incorrect
- Other

Fixed, Can't Fix or What?

Total Reported: 3084 **Fixed:** 509

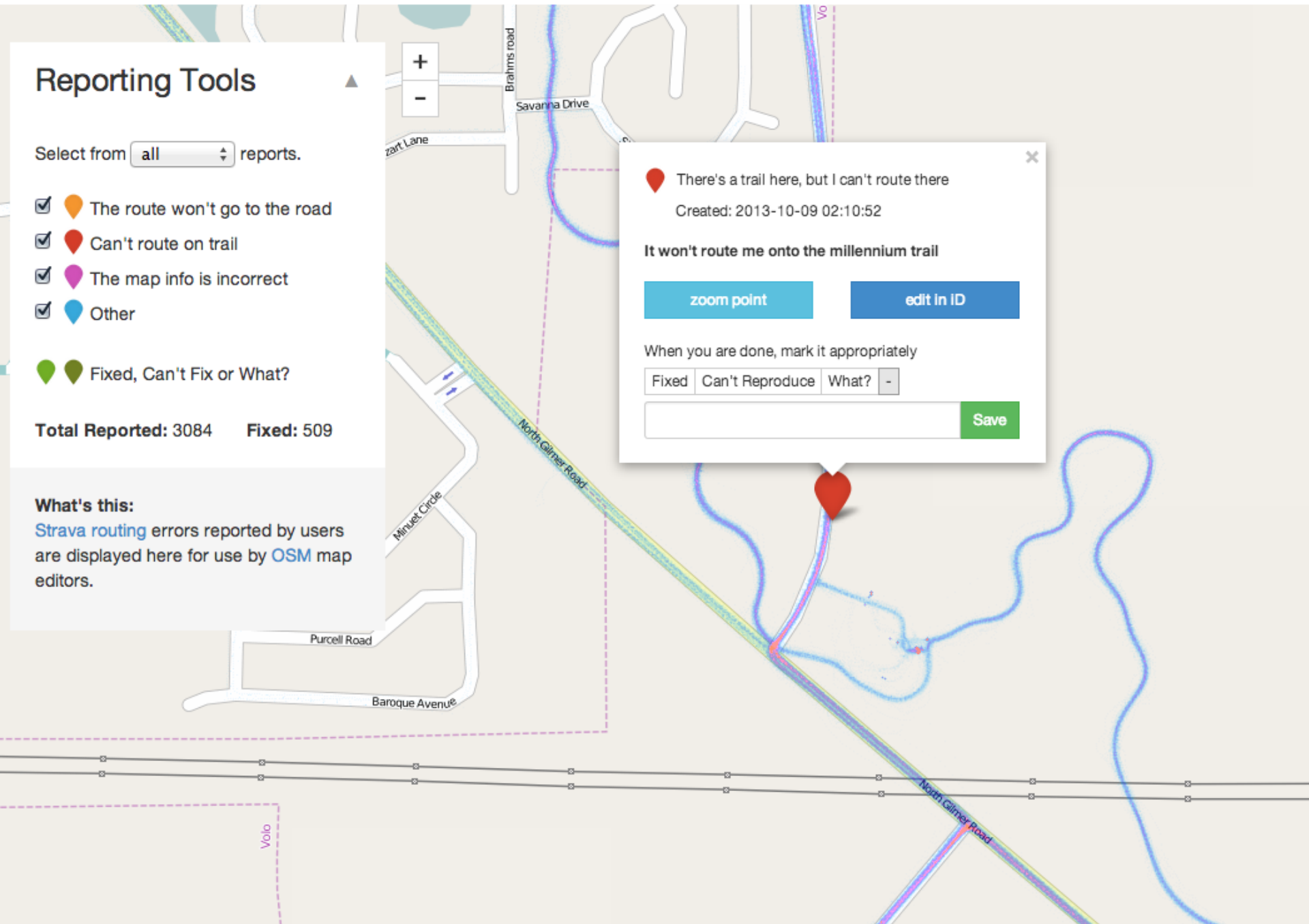
What's this:

Strava routing errors reported by users are displayed here for use by OSM map editors.

There's a trail here, but I can't route there
Created: 2013-10-09 02:10:52





It won't route me onto the millennium trail


When you are done, mark it appropriately



Reporting Tools

Select from reports.

-  The route won't go to the road
-  Can't route on trail
-  The map info is incorrect
-  Other

  Fixed, Can't Fix or What?

Total Reported: 3084 **Fixed:** 509

What's this:

Strava routing errors reported by users are displayed here for use by OSM map editors.

+

-



There's a trail here, but I can't route there

Created: 2014-02-26 02:14:05

The automatic mode sort of follows the fire road but it's off enough that any route built with this tool going on this fire road results in a bad experience with my garmin gps device. It just constantly beeps telling me I'm off course when I'm not. Only way around this I see is to use manual mode and like 1000 points to match the path. If I could create a route from my actual ride or somehow use the data I've uploaded to strava for a ton of rides it would be 100% accurate. Not sure why that data isn't somehow being used to create a more accurate route here.

zoom point

edit in ID

When you are done, mark it appropriately

Fixed
 Can't Reproduce
 What?

Save

Ridge Road

Chicken Shack Fire Road

Chicken Shack Fire Road

Eagle Gap Road

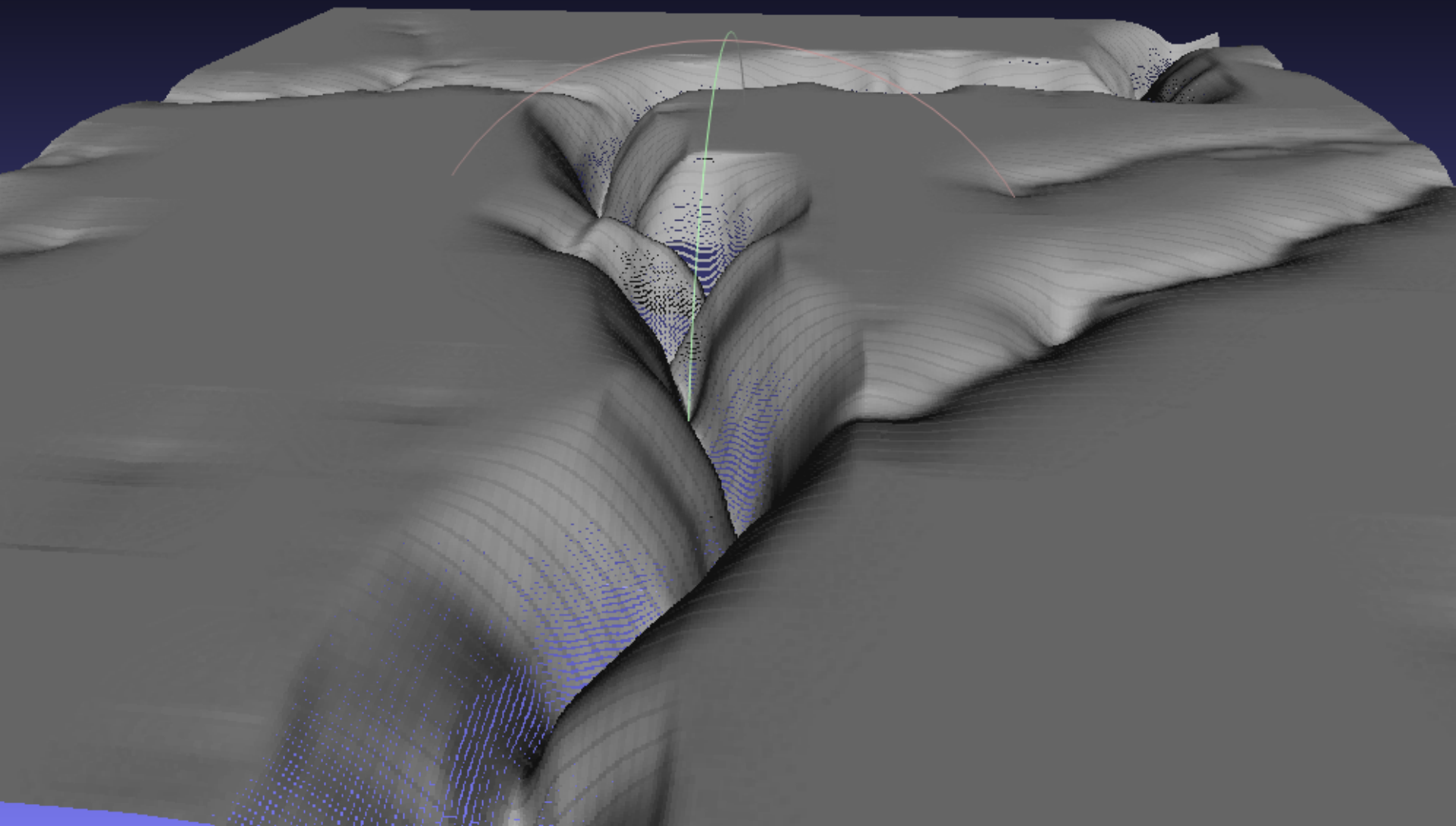
Slide demo

<http://labs.strava.com/slide/demo.html#17/-122.54545/38.05432>

Sliding the geometry into place

- Runs server side and is written in Go
- Leverages the Strava global GPS dataset
- Improves the path one step at a time
- Most slides complete in under 0.3 seconds

labs.strava.com



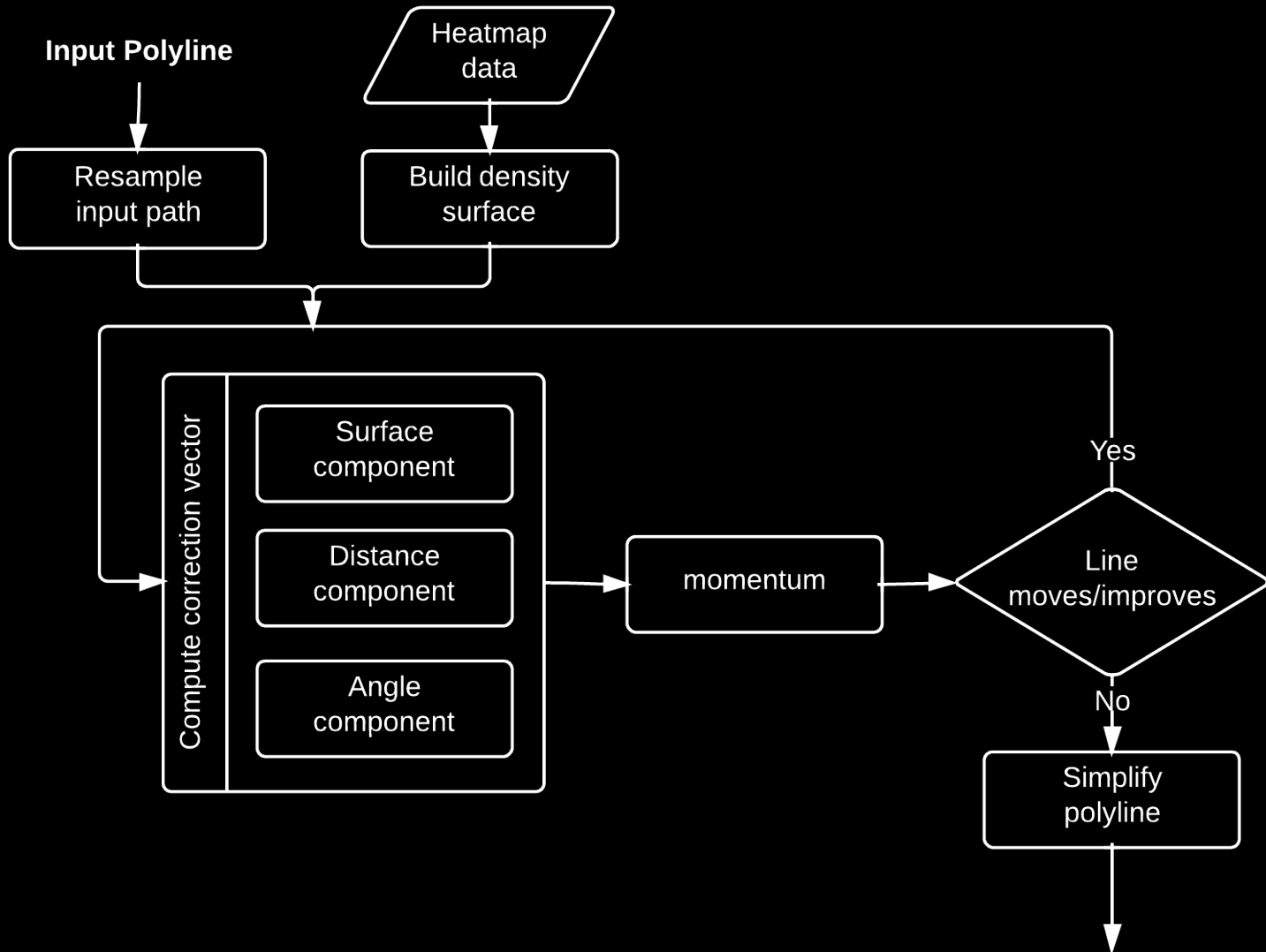
Slide

Based on Mathematical Optimization

3 components to the cost function

- Depth with respect to the surface
- Equal distance between resampled points
- Maximize vertex angles

Slide overview Slide



Integration with the iD Editor

- Self hosted fork of iD
- Extra Slide operation/action
 - select 2 or more nodes on the same way, will slide section between them
 - select a way to slide the whole thing

[**strava.github.io/iD**](https://strava.github.io/iD)

Id demo

<http://strava.github.io/iD/#background=Bing&map=17.34/-122.54499/38.05496>

<http://strava.github.io/iD/#background=Bing&map=16.90/-88.14613/42.31283>

Thank you

labs.strava.com

- Global Heatmap
- Reported Routing Errors
- Slide Tool

Dr. Paul Mach
paul@strava.com